

Midwest Big Data Hub

Edward Seidel

Director, NCSA

Founder Prof. of Physics, Prof of Astronomy

On behalf of the Midwest Big Data Hub



Brian Athey



Sarah Nusser



Beth Plale



Josh Riedy



Ed Seidel

SEEDCorn: Sustainable Enabling Environment for Data Collaboration (aka MBDH)



- A partnership of academia, government, industry, nonprofits
- Over 100 partners already
 - Colleges, Universities, Medical Centers, of all types
 - Industry, Non-profits, NGOs
 - States, cities, communities

Midwest Big Data Hub

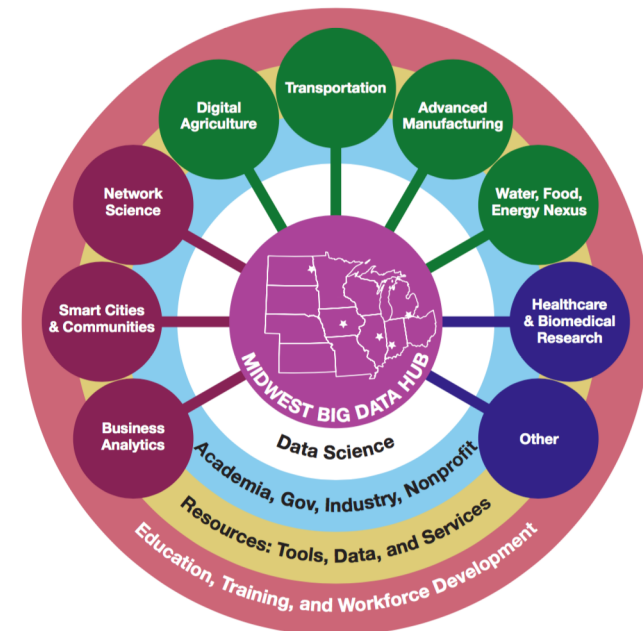
Accelerating the Big Data Innovation Ecosystem



Spokes *Currently* Identified by MBDH

(Leaders across midwest for each area!)

- **Network Science**
 - *Including Data Intensive Research in the Social, Behavioral, and Economic Sciences....*
- **Urban Science**
 - *Including Smart and Connected Communities...*
- **Business Analytics**
- **Digital Agriculture**
- **Transportation**
- **Advanced Manufacturing**
- **Food, Energy, Water**
- **Healthcare & Biomedical Research**
 - *Including neuroscience...*
- **Others as proposed...**
 - *Including Data Privacy*



Spokes are supported by the Hub

Crosscutting Rings Supported by MBDH

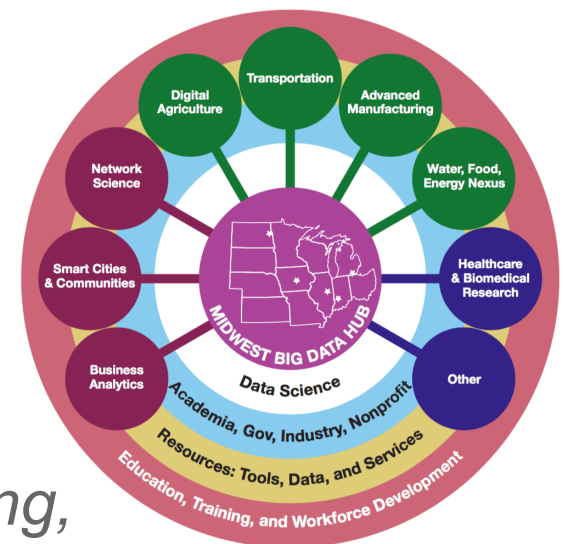
- **Data Science**

- *Including Data Intensive Research in the Social, Behavioral, and Economic Sciences...*
- *Replicability and Reproducibility in Data Science*

- **Education**

- *Including new approaches to STEM learning environments...*

- **Data Tools and Services**



*Rings are cross-cutting,
supporting all spokes*

Goals and Outcomes/Impacts Expected

- Strengthening, creating and securing funding numerous new public-private partnerships
 - Additional funding from agencies (NSF, NIH, DOE, NIST, USDA...), NGOs, governments, industry will be sought
- Accelerating technology transfer projects
- Introducing new Big Data educational activities into universities, industry and government
 - Data policies, management, and best practices with real data for real impact
 - Will involve, train many young data scientists

Midwest Big Data Hub

Accelerating the Big Data Innovation Ecosystem



Goals and Outcomes/Impacts Expected

- Starting *pilots* in data environments (SEEDCorn!)
 - Collaborations will come together to develop and test new approaches to data sharing, policies, algorithms
 - Will work with various organizations to test pilots with real data
 - For example: helping farmers balance productivity and sustainability with detailed data on crop growth, soil conditions & environment
 - Research Data Alliance (RDA), National Data Service (NDS), other orgs. HPC centers supporting pilots
- Developing and implementing new sustainability models
 - Models for long term data stewardship, private-public partnerships, educational practice
 - Different approaches will be needed!

We are just getting started!

- We are bootstrapping our way to function
 - Executive Director sought!
 - You are invited to join!
- Our initial planning involves a series of startup meetings beginning in January...
- Check out our website at midwestbigdatahub.org
 - White papers, *interim* steering group leadership, and more...

Midwest Big Data Hub

Accelerating the Big Data Innovation Ecosystem





Let the Hubs begin!!

TIMELINE

Key Near-term Dates for Hub Actions

- Nov 6: Steering Committee mails
- Nov 9: Mailing entire collaboration with guidelines for how to propose MBDH activities
 - If not already involved, sign up on website if want to receive this
- Dec 9: Draft LOI due
 - Proposers to coordinate with spoke leads if appropriate
 - Additional document describing how you leverage hub assets, what you expect, what data collections you might bring, and more...see website and mail for details
- Dec 16: Hub governance team meet in Chicago to plan
- Mid January: First All Hands meeting

Summary

- MBDH is highly integrative across all sectors from academia, governments, NGOs, and industry
 - Building collaborations around grand challenges in science and society, focused on Midwest region
 - Helping to automate big data life cycle
 - Enable access to and increasing use of data assets
- Regional structure to bring together communities across region, nation
 - Focus on problems of the region, and beyond
 - Working groups formed, interim steering committee, workshops planned
- We are starting to prepare for first NSF spoke solicitation
 - Join us!

Midwest Big Data Hub

Accelerating the Big Data Innovation Ecosystem

