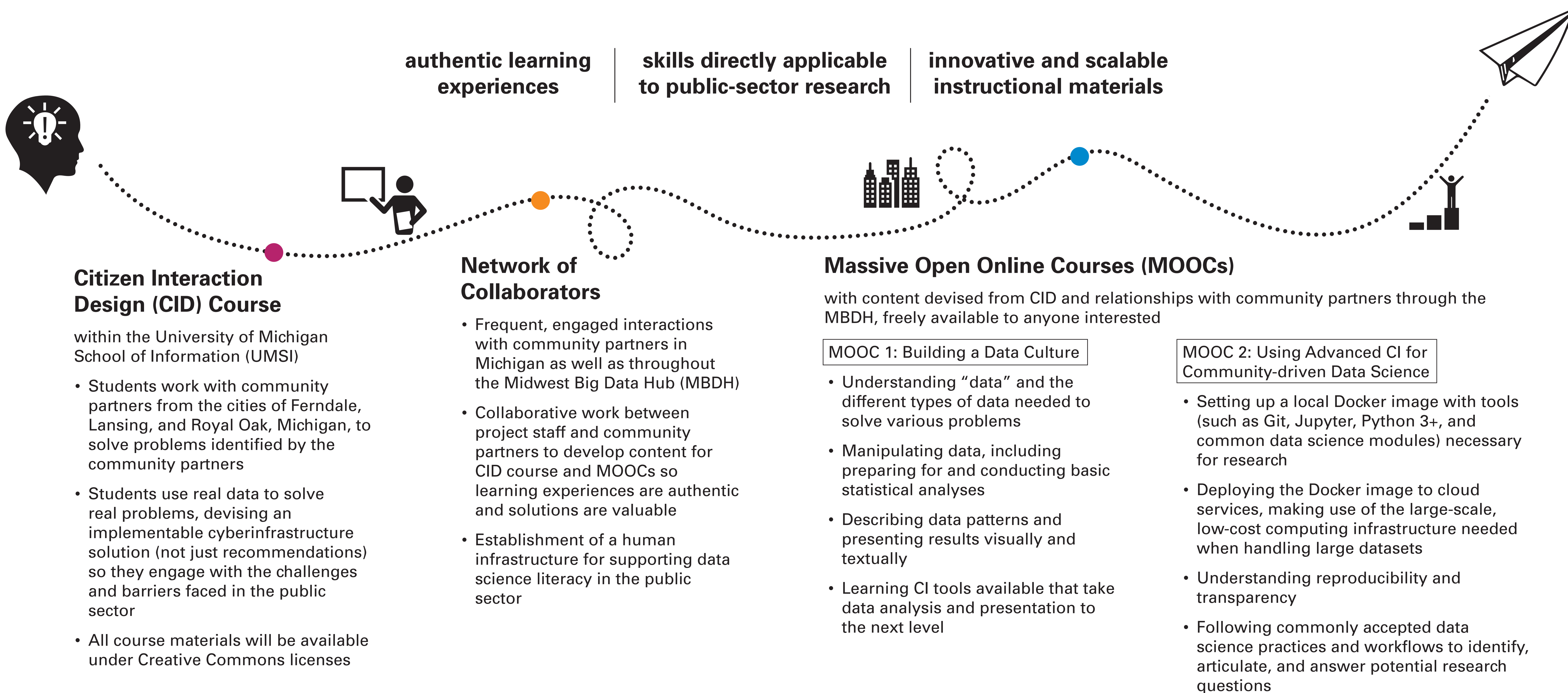


Preparing the Public-Sector Research Workforce to Impact Communities through Data Science

Libby Hemphill, Christopher Brooks, Lynette Hoelter, and Clifford A. Lampe; University of Michigan

Training **undergraduate students, graduate students, and community stakeholders** in collecting, extracting, cleaning, annotating, and analyzing data generated and used by government organizations to further enable **data-based decision making**. Working with the Midwest Big Data Hub (MBDH), we identify interested **community partners** who will guide the development of innovative and scalable instructional materials and suggest relevant data sources for in-person and online training offered by faculty at the University of Michigan. Direct community involvement ensures **authentic learning** experiences centered on skills directly applicable to public-sector research.



contract #: 1829724

