

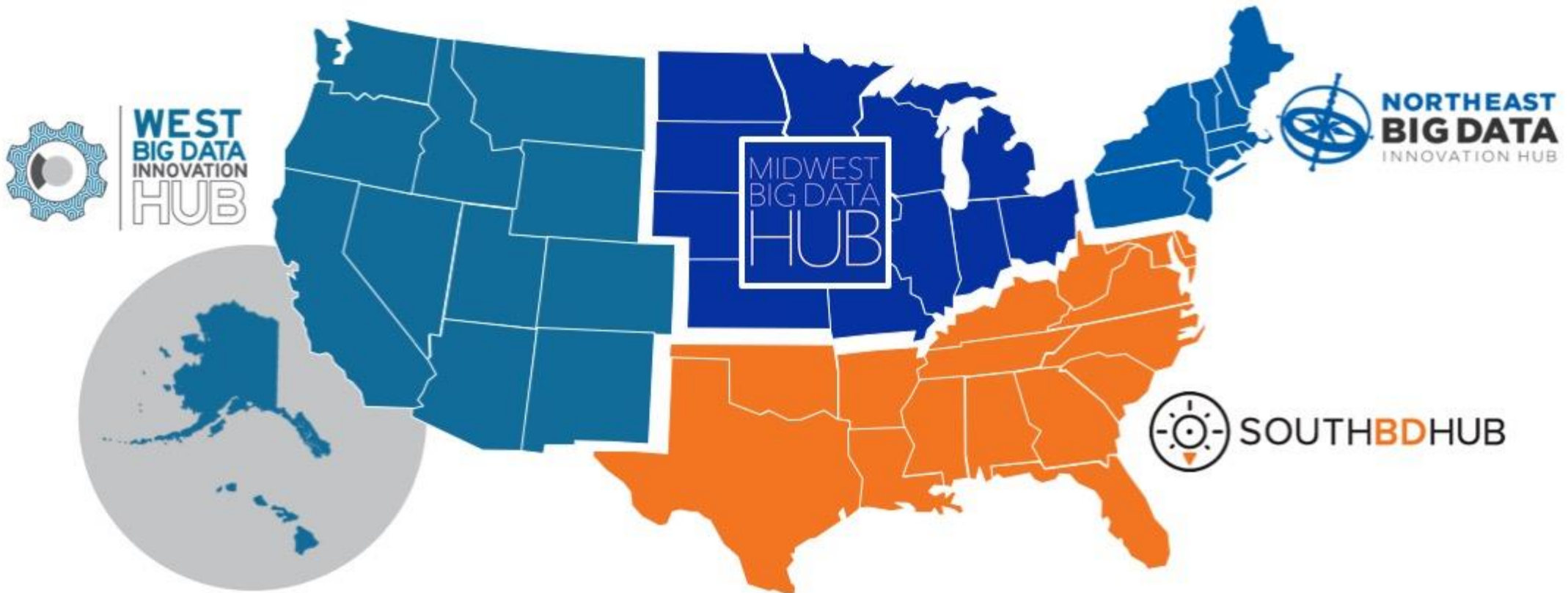


Welcome!

Regional Community Meeting
Oct 27-28, 2021



Four Hubs, One Mission



What We Do

Engage communities, share resources, and build partnerships that harness data science to address societal and scientific challenges.



MBDH mission and strategic goals

The mission of the Midwest Big Data Innovation Hub (MBDH) is to strengthen the data ecosystem by developing effective networks across academia, industry, government and non-governmental organizations. The Hub strives to address scientific and societal issues of regional and national interest and to foster innovation across priority and cross-cutting areas that are particularly important in the Midwest.

1. Build and cultivate **Communities** around Data
2. Foster innovative activities across our **Priority Areas**
3. Increase **Education and Training** around Data
4. Develop a **National Coordination** effort with the other BD Hubs
5. Establish organizational **Sustainability**

Priority Areas

- Advanced Materials and Manufacturing
- Big Data in Health
- Digital Agriculture
- Smart & Resilient Communities
- Water Quality

Cross-cutting Themes

- Data Science Education and Workforce Development
- Cyberinfrastructure and Data Sharing

MBDH science writing
and outreach interns



Building capacity with community development activities

Building proposal development capacity in the Midwest
Monthly webinar series



MBDH Collaboration Cafe

Registration is open! Oct 27-28 (online)



Regional Community Meeting

Call for Proposals

Community Development and Engagement program

Growing a data science community in the Midwest



Building regional data science instructional capacity



Midwest Carpentries Community

Monthly webinar and Slack community



MBDH Student Community

WATER DATA FORUM

Moderated cross-sector discussions and collaboration-building throughout 2021



DEMYSTIFYING WATER DATA

Midwest Big Data Hub Organizational Structure



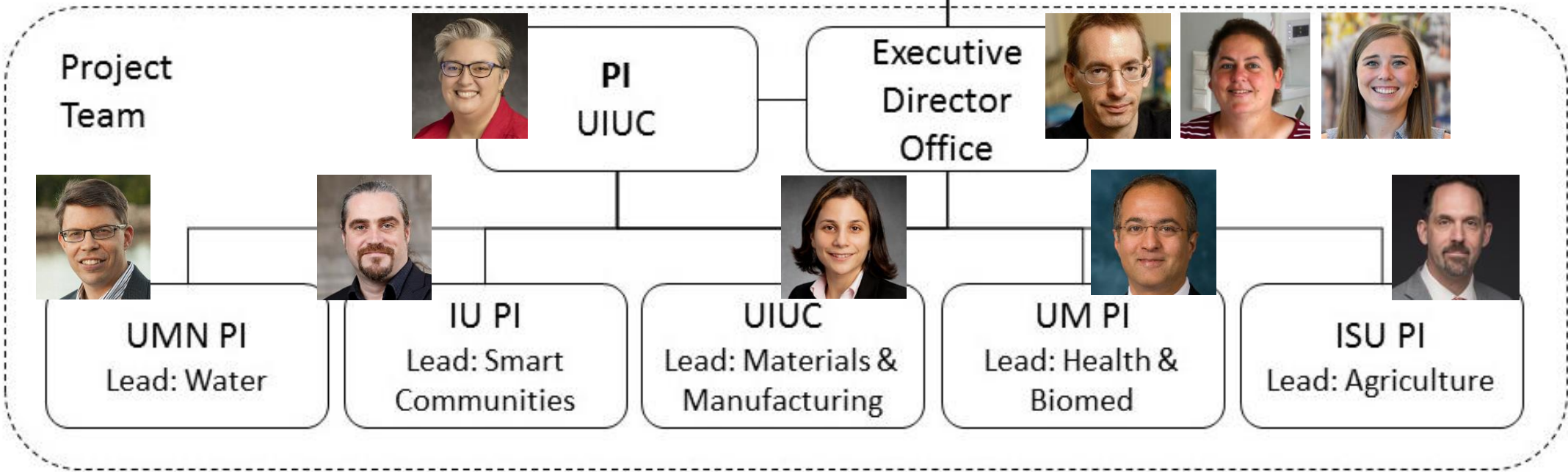
Sub-Awards

Community & Stakeholder Committee

BDH National Coordination Committee

Seed Fund Steering Committee

Co-PIs



Community Advisory Panel (CAP)

- Advisory group that spans sectors, disciplines, and institution types
- Provides input on trends, challenges, opportunities
- Open self- and colleague nominations <https://midwestbigdatahub.org/cap/>



Seed Fund Steering Committee (SFSC)

- Independent group that spans sectors, disciplines, and institution types
- Provides expert review of CDE proposals in relation to MBDH program goals



Community Development and Engagement program

Midwest Big Data Innovation Hub



IOWA STATE
UNIVERSITY



UND
UNIVERSITY OF
NORTH DAKOTA

supported by NSF award [1916613](#)



Community Development & Engagement program as incubator



- Developing programmatic activities that the community is invested in
- Partnership between Hub and community
- Driven by community needs
- Led by community members
- 'Seed – Sprout – Spread' model:
 - Incubate projects at the seed phase
 - Provide support to grow to the sprout phase
 - Embed activities to grow to the spread phase – independence / sustainability
- Lower barriers for proposers and accelerate timelines by providing Hub project coordination support as the primary benefit given to awardees
- Create value that can be leveraged by others
- Integrated into MBDH theme areas

Portfolio of CDE projects (2020-2021)

Project	Partner(s)	Health	Dig Ag	Materials & Manuf	S&RC/DSSG	Water	DS Edu	CI
Midwestern Consortium for Computational Pathology (MCCP)	OSU, UMich, Pitt, CWRU, CCHMC, Mayo Clinic	●					●	●
Midwest Carpentries Community	U of Wisconsin - Madison, The Carpentries, small institutions & MSIs	○	○	○	○	○	●	
Midwest Sustainable Transportation Datathon	UIUC, Iowa State, Purdue				●		●	●
Building Data Science Education Capacity at Small Institutions in Digital Agriculture and Water Quality	Central State University, other small institutions & MSIs		●			●	●	
Building Data Science Education Capacity at Small Institutions in Neuroscience	Lawrence Technological University, Indiana, MSIs	●					●	
Augmented Reality/Mixed Reality Summer Working Institute	Monmouth College + industry partner			●			●	
MBDH Learning Innovation Fellows program	Iowa State, UMich, William & Mary, QUBESHub						●	●
Community Developed Viral Surveillance for Precision Livestock Agriculture	Iowa State	●	●				●	
Tribal Community Development and Engagement for Digital Agriculture and Big Data	Tribal Nations Research Group, University of North Dakota, Grand Farm/Emerging Prairie		●				●	●
Data Science @ St. Kate's: By Women, For Women	St. Catherine University				●		●	
Workshop and Conference on Data for Good in Education	Trinity Christian College				●		●	

Who is eligible to participate?

- Lead proposer(s) (PI) must be primarily affiliated with an academic, governmental, or non-profit organization within the 12-state Midwest Big Data Hub region (Illinois, Indiana, Iowa, Kansas, Michigan, Minnesota, Missouri, Nebraska, North Dakota, Ohio, South Dakota, and Wisconsin)
- Activities may include industry partner participation and support
- Lead PIs are limited to one proposal per funding cycle as lead proposer
- To broaden participation, grow the MBDH community, and ensure a transparent and fair process, proposers who are current PIs or co-PIs of the MBDH must include collaborators who are not currently affiliated with the MBDH.



What kinds of proposals are we looking for?

- Preference will be given to activities or events occurring within the 12-state Midwest region, and which are open to participants from outside the host institution.
- Current preference for virtual/hybrid activities through the end of 2022
- Synchronous or asynchronous activities (or a combination)
- Focus on capacity-building activities that grow the community
- Examples:
 - Proposal development workshops that address capacity building
 - Train-the-Trainer events on data science topics
 - Development of curricula or best practices for online data science education
 - Hackathons and data challenges, especially focused on student mentoring
 - Activities to extend data science training and workforce development to non-traditional students and/or under-represented groups

Proposal elements

- Relevant Priority Area(s) and/or Cross-cutting Theme(s)
- Project Description (1 page maximum)
- Project Plan and/or Event Agenda (1 page maximum)
- Outcomes and Impacts (1-2 paragraphs)
- Project Effort and Requested Support (1 page maximum)
- Data management plan (1 page maximum)
- Proposer's biosketch
- Letters of collaboration (optional)

What support is available?

- Communications - Assistance with outreach and participant recruitment, promotion and amplification, website development, web forms (event registration, surveys, etc.)
- Administrative and project coordination support - Meeting coordination, note-taking, project planning, long-term storage and hosting of project materials
- Event planning, facilitation, and logistics support - Preparation for webinars, workshops, training activities, and other group events
- Participant support for attendees (especially students and qualifying speakers) - Estimate the number of participants and the cost for each
- *We encourage proposers from small institutions and MSIs to include salary support in their budgets if that is a deciding factor in their ability to participate.*
- *No direct funding or institutional overhead will be awarded to proposers unless otherwise negotiated during the review process.*

Submission process

- View Call for Proposals
- Complete the proposal template
- Create a single PDF of the proposal + biosketch(es)
- Create an EasyChair account (free)
- Submit the proposal

<http://midwestbigdatahub.org/cde/>

The screenshot shows the 'New Submission for MBDH CDE 2021' page on EasyChair. The page has a navigation bar with links for 'New Submission', 'MBDH CDE 2021', 'Conference', 'News', and 'EasyChair'. Below the navigation bar, there is a heading 'New Submission for MBDH CDE 2021' and a note: 'Follow the instructions, step by step, and then use the "Submit" button at the bottom of the form. The required fields are marked by *.' The main section is titled 'Author Information' and includes instructions: 'For each author please fill out the form below. Some items on the form are explained here:'. There are three bullet points explaining the 'Email address', 'Web page', and 'corresponding author' fields. Below the instructions is a form for 'Author 1' with fields for 'First name', 'Last name', 'Email', 'Country/region', 'Organization', and 'Web page'. A checkbox labeled 'corresponding author' is checked.

EC MBDH CDE 2021 (author)

New Submission MBDH CDE 2021 Conference News EasyChair

New Submission for MBDH CDE 2021

Follow the instructions, step by step, and then use the "Submit" button at the bottom of the form. The required fields are marked by *.

Author Information

For each author please fill out the form below. Some items on the form are explained here:

- **Email address** will only be used for communication with the authors. It will not appear in public Web pages of this conference. The email address can be omitted for not corresponding authors. These authors will also have no access to the submission page.
- **Web page** can be used on the conference Web pages, for example, for making the program. It should be a Web page of the author, not the Web page of her or his organization.
- Each author marked as a **corresponding author** will receive email messages from the system about this submission. There must be at least one corresponding author.

Author 1 ([click here to add yourself](#)) ([click here to add an associate](#))

First name*:

Last name*:

Email*:

Country/region*:

Organization*:

Web page:

corresponding author

How are we reviewing the proposals?

- MBDH Seed Fund Steering Committee
 - 7 data science and domain experts; volunteers, unaffiliated with the MBDH
- Review criteria
 - Does the activity help advance one or more of the Priority Areas and/or Crosscutting Theme Areas of the Hub?
 - Does the activity engage new participants, especially underrepresented groups and smaller institutions, in the Hub community?
 - Does the activity generate new partnerships with industry, government, and/or nonprofits?
 - Is the proposed timeline and budget realistic for the stated goals?
 - Does the project plan address sustainability where appropriate, such as identifying opportunities for future external funding from government agencies, foundations, or industry, and include plans for continued collaboration?

More information

- <https://midwestbigdatahub.org/cde/>
- info@midwestbigdatahub.org

@MWBigDataHub

Call for Proposals

Community Development and Engagement program

Growing a data science community in the Midwest



[1550320](#)
[1916613](#)

